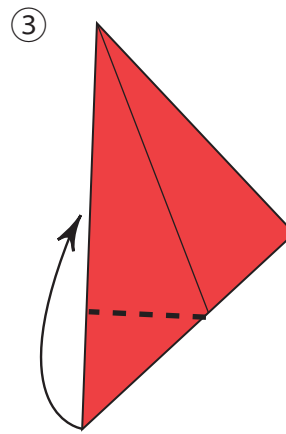
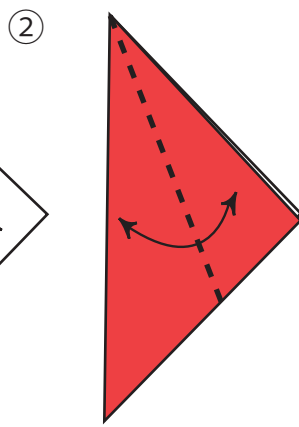
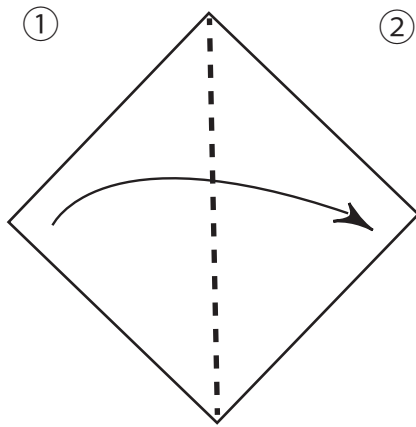
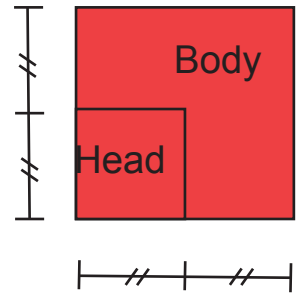


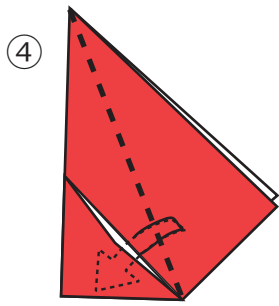
Jolly Santa Greeting Card

Created by Shoko Aoyagi
Diagrams by Shoko Aoyagi

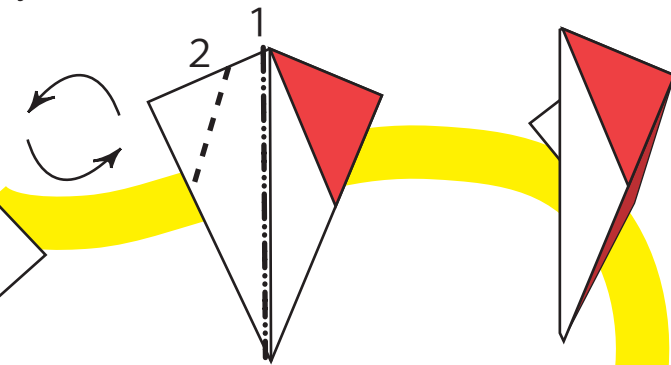
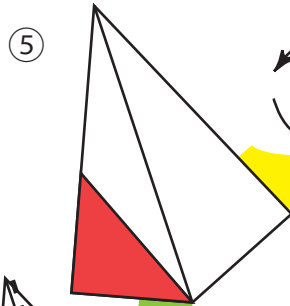
© Shoko Aoyagi
October 2017



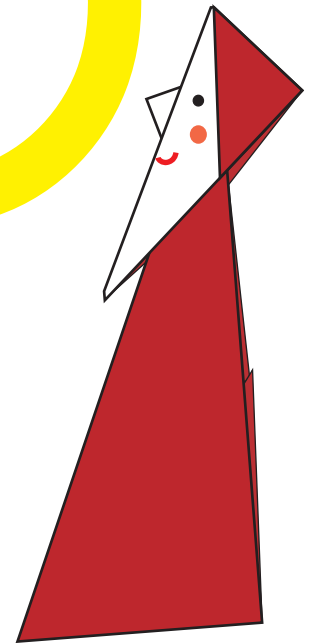
top layer only



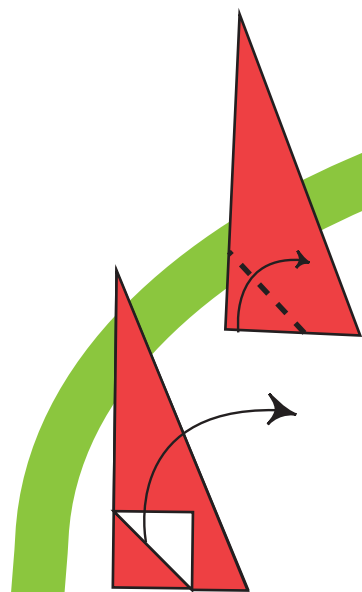
top layer only



Insert the body
into the pocket.



Draw Santa's face.
You can put a small
gift into the card.
Enjoy!



Right angle
triangle- shaped envelope

